

K-SuperTron

We are always thinking of the basic, simple, sturdy & the beyond
from lab to prouction process !!!



New Laboratory Equipments

The Basic, Simple, Sturdy & the Beyond !

한국코프로텍(주)

Korea Process Technology Co.,Ltd.

Hot plate, Stirrer

KHS-D, Hot plate & Stirrer



Feature

- Advanced MCU Processor
- Highly durability and uniformity
- High safety
- High fidelity LCD display
- Power consumption : 620W
- Speed range : 80 to 1500 rpm
- Volume range (H2O) : 20L
- Timer : 99hr 59min
- Display : Full digital LCD backlight
- Motor type : Brushless shade motor
- Power supply : 1Phase, AC 120V,60Hz or AC 230V, 50/60Hz

KHP-D, Hot plate



Feature

- Advanced MCU Processor
- Highly durability and uniformity
- High safety
- High fidelity LCD display
- Power consumption : 650W
- Heating temperature : Max 400 °C
- Timer : 99hr 59min
- Display : Full digital LCD backlight
- Heating output : 60W
- Power supply : 1Phase, AC 120V,60Hz or AC 230V, 50/60Hz

KMS-D, Magnetic Stirrer



Feature

- Advanced MCU Processor
- Highly durability and uniformity
- High safety
- High fidelity LCD display
- Power consumption : 50W
- Speed range : 80 to 1500 rpm
- Volume range (H2O) : 20L
- Display : Full digital LCD backlight
- Motor type : Brushless shade motor
- Power supply : 1Phase, AC 120V,60Hz or AC 230V, 50/60Hz



Hot plate, Stirrer

KHS-B, Hot plate & Stirrer



Feature

- Advanced MCU Processor
- Highly durability and uniformity
- High safety
- Power consumption : 620W
- Speed range : Max 1500 rpm
- Volume range (H2O) : 20L
- Heating temperature : Max 400 °C
- Motor type : Brushless shade motor
- Power supply : 1Pahse, AC 120V,60Hz or AC 230V, 50/60Hz

KHP-B, Hot plate



Feature

- Advanced MCU Processor
- Highly durability and uniformity
- High safety
- Power consumption : 650W
- Heating temperature : Max 400 °C
- Power supply : 1Pahse, AC 120V,60Hz or AC 230V, 50/60Hz

KMS-B, Magnetic Stirrer



Feature

- Advanced MCU Processor
- Highly durability and uniformity
- High safety
- Power consumption : 50W
- Speed range : Max 1500 rpm
- Volume range (H2O) : 20L
- Display : Full digital LCD backlight
- Motor type : Brushless shade motor
- Power supply : 1Pahse, AC 120V,60Hz or AC 230V, 50/60Hz

Common Accessories (KHS-D & KHS-B)

KHSTP

- Temp. Probe for Digital



KHSTTP

- Teflon Temp. Probe for Digital



KHSSR

- Stand Rod



KT5-S-8G

- Holder/Clamp/Clip for Temp. Probe



Overhead Stirrer

K-STAR 25 digital Overhead stirrer



K-STAR 40 digital Overhead stirrer



K-STAR 60 digital Overhead stirrer



Feature

- High stability
- High fidelity LCD display
- Touch button
- Advanced MCU processor
- High safety
- High durable
- Stirring capacity : 25L
- Maximum viscosity : 70,00mPas
- Timer : 99hr 59min
- Power consumption : 150W
- Power supply : 1 Phase, AC120V, 60Hz or AC230V, 50/60Hz

Feature

- High stability
- High fidelity LCD display
- Touch button
- Advanced MCU processor
- High safety
- High durable
- Stirring capacity : 40L
- Maximum viscosity : 100,00mPas
- Timer : 99hr 59min
- Power consumption : 170W
- Power supply : 1 Phase, AC120V, 60Hz or AC230V, 50/60Hz

Feature

- High stability
- High fidelity LCD display
- Touch button
- Advanced MCU processor
- High safety
- High durable
- Stirring capacity : 60L
- Maximum viscosity : 150,00mPas
- Timer : 99hr 59min
- Power consumption : 200W
- Power supply : 1 Phase, AC120V, 60Hz or AC230V, 50/60Hz

High stability
Anti-trembling function for impelle

High fidelity LCD display
Operation icon of high intuitiveness and easy to read backlit LCD are equipped

Touch button
Excellent design focused on the convenience of users

Advanced MCU processor
Control the speed of operation precisely and steady and constant stirring speed against viscosity change

Powerful and soft supports various viscosity
Belt type gear system with powerful motor realize soft and powerful operation 3 ratio of gear applied products cover wide range of sample

High durable
Chrom-plated anti-rust chuck

High safety
Over-heat, over-load, over current protection to secure the safety of products and sample



Overhead Stirrer

K-STAR 25 basic Overhead stirrer



Feature

- High stability
- Advanced MCU processor
- High safety
- High durable

- Stirring capacity : 25L
- Maximum viscosity : 70,00mPas
- Maximum torque : 120Ncm
- Speed range : 100 to 2,000 rpm
- Power consumption : 150W
- Power supply : 1 Phase, AC120V, 60Hz or AC230V, 50/60Hz

K-STAR 40 basic Overhead stirrer



Feature

- High stability
- Advanced MCU processor
- High safety
- High durable

- Stirring capacity : 40L
- Maximum viscosity : 100,00mPas
- Maximum torque : 180Ncm
- Speed range : 80 to 1,200 rpm
- Power consumption : 170W
- Power supply : 1 Phase, AC120V, 60Hz or AC230V, 50/60Hz

K-STAR 60 basic Overhead stirrer



Feature

- High stability
- Advanced MCU processor
- High safety
- High durable

- Stirring capacity : 60L
- Maximum viscosity : 150,00mPas
- Maximum torque : 270Ncm
- Speed range : 50 to 800 rpm
- Power consumption : 200W
- Power supply : 1 Phase, AC120V, 60Hz or AC230V, 50/60Hz

Common Accessories (digital & basic)



KT1008

Homogenizer Tool, Rotor Φ6.1, Stator Φ8, 1~50 ml



KTR020

Safety stand, U-type, 34x29cm stand base, with Rod.



KTHC010

Homogenizer Tool, Rotor Φ6.1, Stator Φ8, 1~50 ml

Vortex Mixer

KVM-n, Vortex Mixer



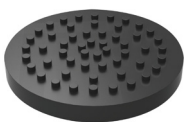
Specification

Model	KVM-n
Type of movement	Orbital
Speed range	0 to 3,300rpm
Operating modes	Touch or continuous
Orbit diameter	Circular orbit, 4.0mm Dia.
Speed control	Stepless
Application container / Number	Hand holding : any micro tube or conical tube Fixed holding (micro tube platform head) : 0.5/1.5/2.0ml micro tube x 1
Construction material	Powder coated aluminum
Driving motor	Brushless shade motor
Permissible temp & humidity	5°C~40°C < 80%
Max load & power	0.5kg, 30w
Power supply	AC120V, 60Hz or AC230V, 50/60Hz

Accessories

KVM1RP

- 3inch Rubber Platform Head



KVM1PC

- Pop-off Cup Head



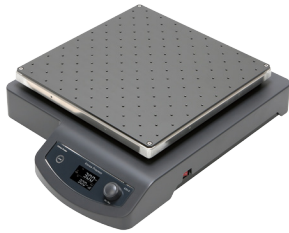
KVM1RA

- Remove Applicator

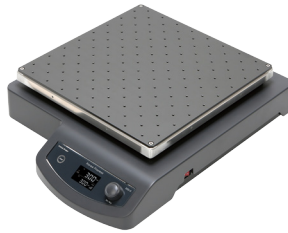


KSH Series, Shaker

KSH-O, Orbital Shaker



KSH-R, Reciprocating Shaker



KSH-3D, 3D Shaker



Feature

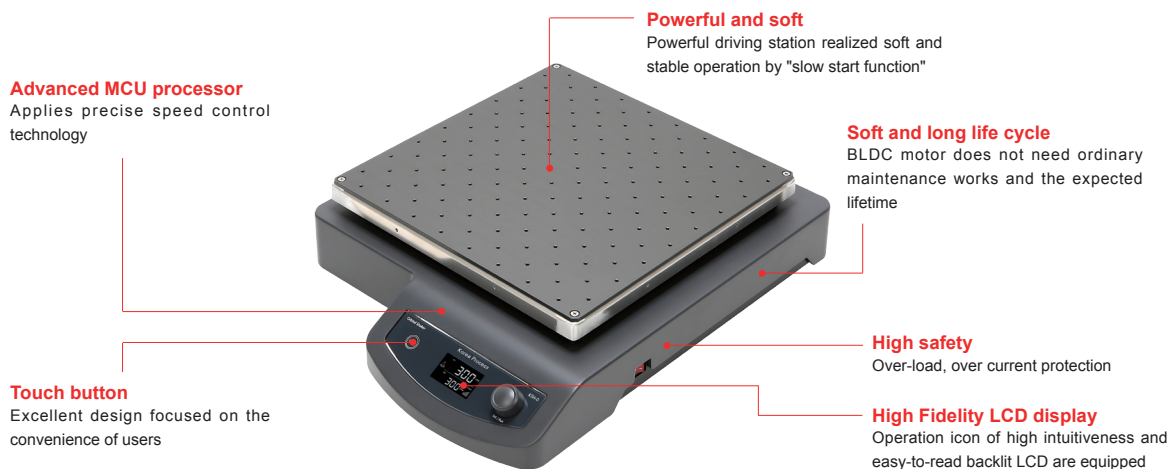
- Advanced MCU processor
- Powerful and soft
- Soft and long life cycl
- High safety
- Touch button
- High fidelity LCD display
- Speed range : 10 to 300rpm
- Timer : 99hr59min., ± 1min.increments
- Display : Full digital LCD display
- Maximum load : 10kg
- Motor type : Brushless DC motor
- Power supply : 1 Phase, AC 120V, 60Hz or AC 230V, 50/60Hz

Feature

- Advanced MCU processor
- Powerful and soft
- Soft and long life cycl
- High safety
- Touch button
- High fidelity LCD display
- Speed range : 10 to 300rpm
- Timer : 99hr59min., ± 1min.increments
- Display : Full digital LCD display
- Maximum load : 10kg
- Motor type : Brushless DC motor
- Power supply : 1 Phase, AC 120V, 60Hz or AC 230V, 50/60Hz

Feature

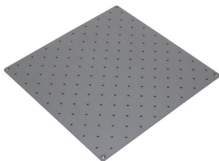
- Advanced MCU processor
- Powerful and soft
- Soft and long life cycl
- High safety
- Touch button
- High fidelity LCD display
- Speed range : 10 to 70rpm
- Timer : 99hr59min., ± 1min.increments
- Display : Full digital LCD display
- Maximum load : 10kg
- Motor type : DC motor
- Power supply : 1 Phase, AC 120V, 60Hz or AC 230V, 50/60Hz



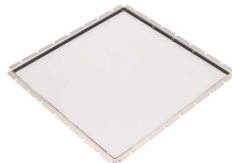
KSH Series, Shaker



Accessories



Universal platform



Rubber mat platform

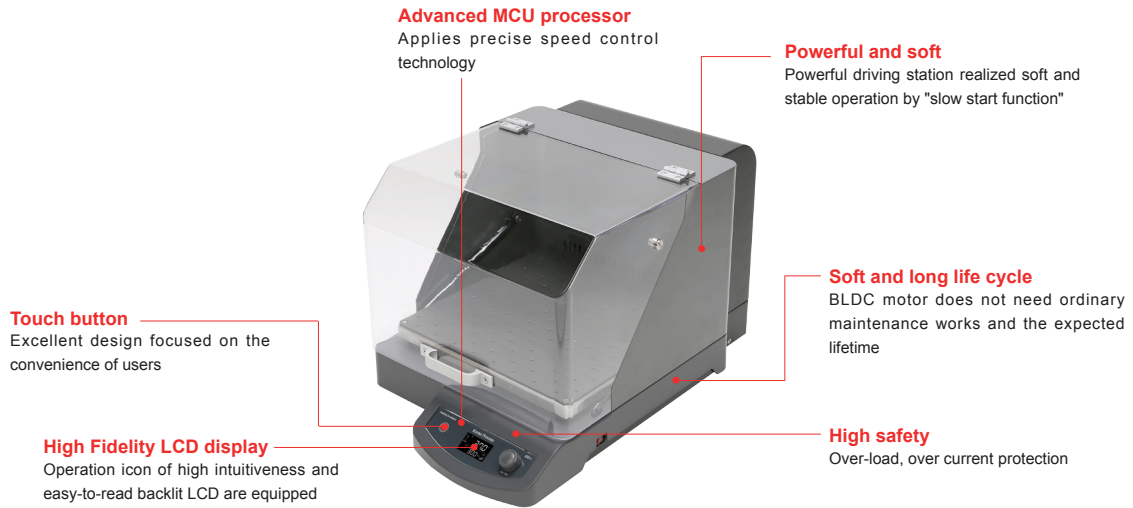


STS wire spring flask holder

Model	Description
KSHUP35	Universal Platform, w350×d350mm (Max. 20ea 100ml Flask, 16ea 250ml Flask and 9ea 500ml Flask)
KSHRP37	Rubber Mat Platform, w370×d370mm
KSHFH100	STS Wire Spring Flask Holder for 100ml Flask
KSHFH250	STS Wire Spring Flask Holder for 250ml Flask
KSHFH500	STS Wire Spring Flask Holder for 500ml Flask
KSHFH1000	STS Wire Spring Flask Holder for 1000ml Flask
KSHFH100A	ABS Flask Holder for 50~100ml Flask
KSHFH250A	ABS Flask Holder for 200~300ml Flask
KSHFH500A	ABS Flask Holder for 500~1000ml Flask

Shaking Incubator

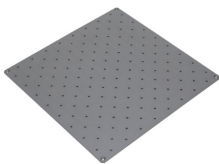
KSH-i, Shaking Incubator



Specification

- Shaking action : Orbital
- Speed range : 10 to 300 rpm
- Temp range : Ambient temperature +5°C to 60°C
- Controller : Digital fuzzy controller with touch button & rotary switch
- Timer : 99hr59min., ± 1min.increments
- Display Full digital LCD display with back-light function
- Programmable function : 5 program, 10 steps
- Maximum load : 10kg
- Motor type : Brushless DC motor
- Power consumption : 450W
- Power supply : 1 Phase, AC 120V, 60Hz or AC 230V, 50/60Hz

Accessories



Universal platform



STS wire spring flask holder

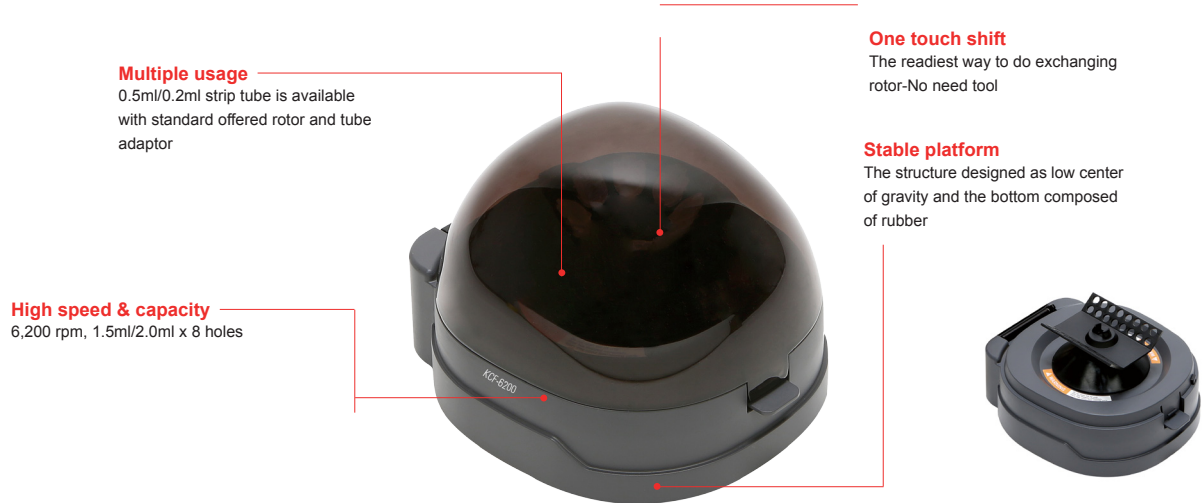


ABS flask holder

Model	Description
KSHUP35	Universal Platform, w350×d350mm (Max. 20ea 100ml Flask, 16ea 250ml Flask and 9ea 500ml Flask)
KSHFH100	STS Wire Spring Flask Holder for 100ml Flask
KSHFH250	STS Wire Spring Flask Holder for 250ml Flask
KSHFH500	STS Wire Spring Flask Holder for 500ml Flask
KSHFH1000	STS Wire Spring Flask Holder for 1000ml Flask
KSHFH100A	ABS Flask Holder for 50~100ml Flask
KSHFH250A	ABS Flask Holder for 200~300ml Flask
KSHFH500A	ABS Flask Holder for 500~1000ml Flask

Centrifuge

KCF-6200 Centrifuge



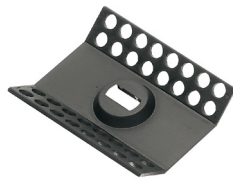
Specification

- Speed : 6,200rpm (no speed adjustments available)
- Max.RCF : 1,800 x g (no g-force adjustments available)
- Capacity : 8 x 0.2/0.5/1.5/2.0ml tubes, 2 x 0.2ml strips
- Driving motor : DC motor
- Power consumption : 8W
- Safety device : Door limit switch
- Power supply : AC 100 to 240V, 50/60Hz

Accessories



Fixed angle rotor



Fixed angle rotor for PCR strip



Adaptors for 0.2ml and 0.4/0.5ml tubes

Model	Description
KCFR8	Rotor, for CF8, 8 x 1.5/2.0ml tubes
KCFR32S	Rotor, for CF8, 32 x 0.2ml strip tubes, 8strip x 4 Line
KCFTA02	Tube Adapter, 8 x 0.2ml for CF8
KCFTA05	Tube Adapter, 8 x 0.5ml for CF8

Dry Bath / Heating Block

KDB, Dry Bath / Heating Block



Specification

- Heat up speed : Approx.50 /min
- Controller : Digital fuzzy controller with touch button & rotary switch
- Timer : 99hr59min, ±1min.increments
- Display : Full digital LCD display with back-light function
- Permissible temp & humidity : 5°C~40°C, <80%
- Heater : Molded heater
- Power consumption : 300W
- Safety devices : Over temp protection, Over current protector, Sensor error detector
- Power supply : 1Phase, AC 120V,60Hz or AC 230V, 50/60Hz

Accessories

Model	Description
KDBCT96	Micro centrifuge tubes Block for 0.2ml Tubes, Ø6 x 96 hole (h16mm)
KDBCT63	Micro centrifuge tubes Block for 0.5ml Tubes, Ø7.7 x 63 hole (h29.5mm)
KDBCT48	Micro centrifuge tubes Block for 1.5/ 2.0ml Tubes, Ø11 x 48 hole (h36mm)
KDBCT15	Conical bottom centrifuge tubes Block for 15ml Tubes, Ø16 x 15 hole (h47mm)
KDBCT8	Conical bottom centrifuge tubes Block for 50ml Tubes, Ø28.7 x 8 hole (h47mm)
KDBTT48	Standard test tubes Block, Ø12 x 48 hole (h35mm)
KDBTT30	Standard test tubes Block, Ø13 x 30 hole (h47mm)
KDBTT30E	Standard test tubes Block, Ø15 x 30 hole (h47mm)
KDBTT24	Standard test tubes Block, Ø16.5 x 24 hole (h47mm)
KDBTT24E	Standard test tubes Block, Ø18 x 24 hole (h47mm)
KDBET	Block Extraction Knob



KDBCT48

*Stirring-Agitating-Mixing-Homo Mixing-Dissolving-
Dispersing-Crushing-Extracting-Suspending-
Emulsifying-Nano Dispersing*



한국코프로텍(주)
Korea Process Technology Co., Ltd.

KOREA PROCESS TECHNOLOGY CO., LTD.

408, Ace High End Tower 8Cha, 84, Gasan digital 1-ro, Geumcheon-gu, Seoul, Republic of Korea

TEL +82 2 6264-5745 / FAX +82 2 6264-5747

www.korpro.com / www.koreaprocess.com / www.korpromall.com

korprotec@naver.com / kmixer@naver.com